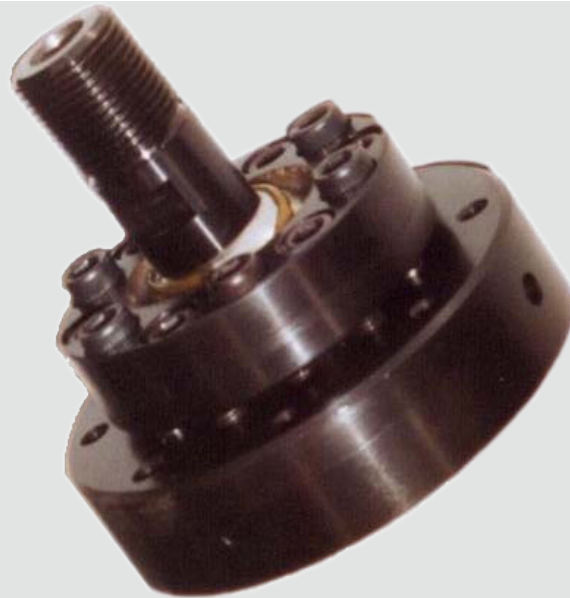




Fatigue Rated Ball Joints



Applications

- Anywhere a high stiffness, zero backlash pivoting connection is needed.

Product Overview

LINK Fatigue rated ball joints are commonly used in conjunction with either linear actuators or struts in test set-ups that require lateral motions. The ball joint helps protect the actuators or struts from transverse forces and bending moments that may exceed their maximum allowable values.

The precision ball and socket design provides a low mass, high stiffness connection with minimal friction, which improves system controllability. All connections can be preloaded so entire load train avoids dynamic load, providing a true fatigue rated design.

PROUDLY SERVING THESE INDUSTRIES





Fatigue Rated Ball Joints

Key Benefits

- Compact design, high reliability
- Operate without backlash
- Wide range of applications
- Low friction ball and socket design



SPECIFICATIONS

Kip Force Ratings:

25 kN (5.5 Kip)

50kN (11 Kip)

100kN (22 Kip)

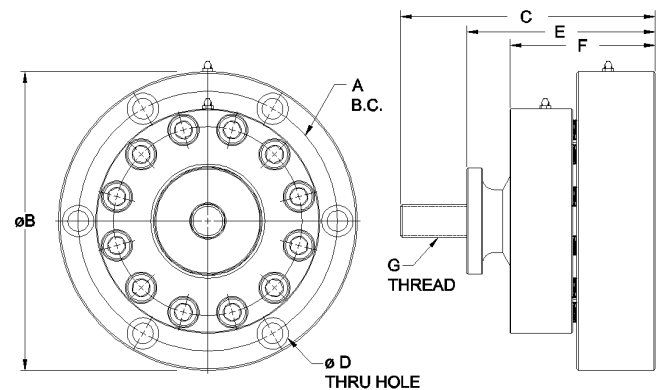
150kN (35 Kip)

250kN (55 Kip)

500kN (110 Kip)

High load carrying capability

Adjustable bearing preload



Link Engineering Company

Visit www.linkeng.com
or call 1-734-GET-LINK

